

Sybase® PowerDesigner® for Oracle®

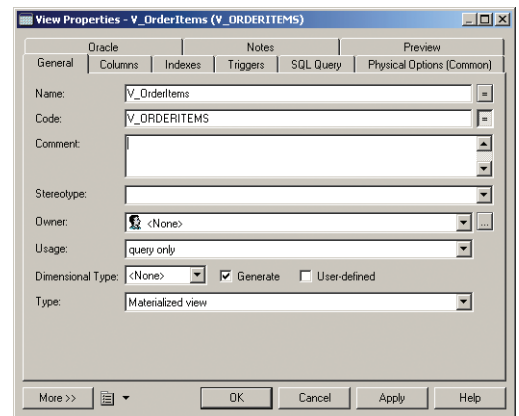


POWERDESIGNER SUPPORTS

- Oracle Version 7
- Oracle Version 8
- Oracle Version 8i (8.1.5)
- Oracle Version 8i2 (8.1.6)
- Oracle Version 9i
- Oracle Version 9i2
- Oracle Version 10g

Sybase® PowerDesigner® 12.0 is an all-in-one modeling and design solution for enterprises that need to build or re-engineer business applications quickly, cost-effectively and consistently. PowerDesigner integrates support for all modern RDBMS and development for Java™, .NET, PowerBuilder® and Web Services. It is a unique set of modeling tools combining several standard modeling techniques: application modeling through UML, Business Process Modeling and market-leading data modeling, all supported by a powerful meta-data management solution.

Sybase PowerDesigner provides Oracle Data Analysts, Database Developers and Database Administrators with complete control over data architecture. Starting with our Requirements Model importing and exporting Word based requirements documents to our Conceptual and Logical models for multiple layers of abstraction, PowerDesigner provides unmatched analysis capabilities. Tied into this is PowerDesigner's customizable database generation engine that creates completely accurate DDL for all supported versions of Oracle databases.



POWERDESIGNER ORACLE SPECIFIC FEATURES

PowerDesigner supports many unique capabilities of Oracle databases. PowerDesigner has complete support for all of the traditional data analysis and design features. PowerDesigner also adds additional Oracle specific artifacts such as Bitmap Join Indexes, Oracle Database Packages, Global Temporary Tables, "Undo" Tablespace complete with all physical options and Storage Partitions for all appropriate database objects. PowerDesigner supports Oracle's abstract data types such as Object and SQLJ data types. PowerDesigner also supports Oracle Materialized Views with Indexes and Physical Options and XML Views. PowerDesigner supports Oracle for Data Warehousing with Oracle Dimension support.

KEY BENEFITS

The safe choice

PowerDesigner's top market position and proven commitment to innovations in Data Modeling make it the safe choice for all modeling requirements. PowerDesigner is a standard in many organizations worldwide.

Improves individual productivity

PowerDesigner's loss-less round-trip database engineering capabilities significantly reduce manual code creation, maintenance and re-engineering efforts.

Provides graphical ease of use

PowerDesigner's highly customizable user interface makes common tasks easy while empowering advanced users rapid access to all features. Wizards and RDBMS-specific property sheets make database design and implementation tasks easy and error free.

Documents existing systems

PowerDesigner fosters greater enterprise collaboration through flexible, wizard driven, list based or multi-model RTF and fully hyperlinked HTML document based reporting.

POWERDESIGNER 12 MODULAR PACKAGING

- **DataArchitect™** – Addresses the needs of the most discriminating Data Modelers and DBAs. DataArchitect offers requirements management and full data analysis and comprehensive multi-level design techniques with round-trip engineering and detailed design capabilities for nearly 60 RDBMS vendor/versions.
- **DataArchitect Enterprise** – Includes one Enterprise Repository connection for each user. Purchase or upgrade to an “Enterprise” version of any of the modules for each seat you want to have collaborate.
- **Viewer** – Addresses the need for documentation teams, higher-level technical managers or other users to access all of the PowerDesigner tools without requiring a full PowerDesigner license. Viewer is a read only tool that can access any PowerDesigner model, retrieve any model from the Enterprise Repository, print models, and create reports. Viewer is available free of charge from www.sybase.com/products/powerdesigner

MINIMUM SYSTEM REQUIREMENTS

- Windows® XP, NT 4.0, 2000
- Pentium® CPU 90MHz
- 96 MB RAM
- SVGA Display (800x600 or better)
- CD-ROM (for installation)
- 200 MB Available disk space

ENTERPRISE VERSION REQUIREMENTS

Supported RDBMS with ODBC connection (Supported RDBMS includes Sybase, Microsoft, IBM and Oracle databases)

Provides open support

PowerDesigner assists in the understanding of heterogeneous systems by supporting all leading development, XML, database and process language standards within a single tool and framework.

Is highly customizable

PowerDesigner can be easily “programmed” to enforce corporate or regulatory standards and practices through embedded VB Scripting, a fully scriptable COM interface, customizable metamodel and fully documented API.

Reduces the risk and impact of change

PowerDesigner significantly reduces the cost and time when implementing any change through a fast and accurate bi-directional multi-model impact analysis view integrating all requirements, analysis, detailed database and application models.

KEY FEATURES

Data Modeling

PowerDesigner supports conceptual, logical and physical data models based on Information Engineering (IE) or IDEF 1/x notation. Conceptual and logical models provide database-independent analysis level models, fully linked to multiple logical or physical models for true multi-level design. PowerDesigner’s Physical models document, generate and reverse engineer structures for nearly 60 RDBMS. Support includes all database artifacts and new techniques such as Java, XML and Web Services in the database, security modeling, and advanced techniques for views and more.

XML Modeling

PowerDesigner supports XML specific modeling techniques to document, generate and reverse engineer XML Schema and XML DTD structures. The XML models are linked (using simple or complex mappings) to process models, UML models and data models to document XML use throughout the enterprise.

Requirements Management

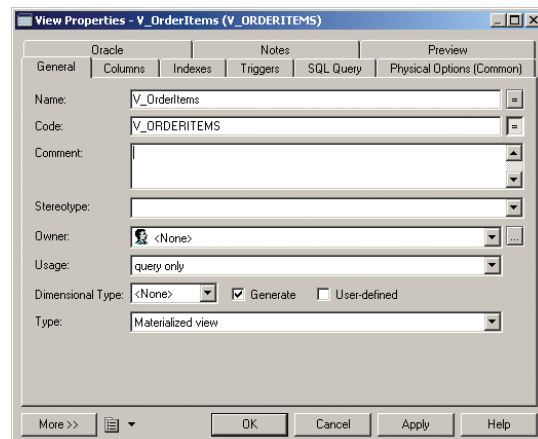
PowerDesigner supports detailed requirements analysis linked to all models to document requirement traceability. Import and synchronization with Microsoft Word places the business users directly into the process.

Document Generation

PowerDesigner’s wizard-driven list-based or multi-model RTF and fully hyperlinked HTML document-based reporting provides any non-modeling user direct access to simple or detailed metadata, fostering greater communication among all members of the project team.

Impact Analysis

PowerDesigner models are fully integrated using unique Link and Synch technologies. Models integrate across all model types for complete enterprise-wide or



project-wide impact analysis. From requirements to business processes to UML and the data that supports it, PowerDesigner streamlines communication and collaboration to dramatically increase the entire organization’s responsiveness to change.

Data Mapping

PowerDesigner’s drag-and-drop data mapping editor allows for easy, fast and accurate data dependency documentation. Simply drag to or from any data-to-data, data-to-UML and data-to-XML model pair and create comprehensive mapping definitions used in impact analysis, persistence code generation and warehouse ETL documentation.

Open Support

PowerDesigner supports all major development platforms by supporting nearly 60 RDBMS vendor/versions (the latest Oracle®, IBM®, Microsoft®, Sybase, NCR Teradata, MySQL and many more).

Customizable

PowerDesigner allows users to optimize their productivity by controlling everything from the user interface to the way PowerDesigner manages modeling tasks and generates code. Model-driven development is achieved through advanced support for UML profiles, automatic transformations and customizable code generation based on patterns, templates and scripts.

Enterprise Repository

A fully integrated design-time repository, hosted by your choice of relational database provides a highly scalable, secure, remote-user friendly centralized metadata management facility. The Enterprise Repository offers capabilities like: Role-based security on models and sub-models, version control configuration management, difference reports between models and versions, and comprehensive search capabilities. PowerDesigner’s Repository may also store and manage any documents important to your projects.